

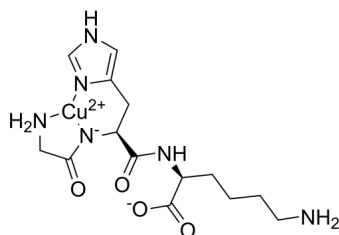
Copper tripeptide

Cat. No.: HY-P0063
Batch No.: 289720
CAS No.: 89030-95-5
Molecular Formula: C₁₄H₂₂CuN₆O₄

ANALYTICAL DATA

Theoretical: C(-), H(-), N(-), Peptide Content(≥60.0%)
Result: C(31.57%), H(7.03%), N(14.79%), Peptide Content(71.1%)

Chemical Structure:



Caution: Product has not been fully validated for medical applications. For research use only.

Tel: 609-228-6898

Fax: 609-228-5909

E-mail: tech@MedChemExpress.com

Address: 1 Deer Park Dr, Suite Q, Monmouth Junction, NJ 08852, USA