

## GPRP

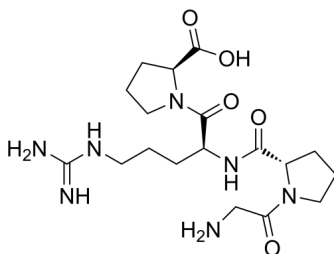
---

Cat. No.: HY-P0074  
Batch No.: 426707  
CAS No.: 67869-62-9  
Molecular Formula: C<sub>18</sub>H<sub>31</sub>N<sub>7</sub>O<sub>5</sub>

### ANALYTICAL DATA

Theoretical: C(-), H(-), N(-), Peptide Content(≥60.0%)  
Result: C(42.99%), H(7.72%), N(19.43%), Peptide Content(84.3%)

Chemical Structure:



**Caution: Product has not been fully validated for medical applications. For research use only.**

Tel: 609-228-6898

Fax: 609-228-5909

E-mail: [tech@MedChemExpress.com](mailto:tech@MedChemExpress.com)

Address: 1 Deer Park Dr, Suite Q, Monmouth Junction, NJ 08852, USA