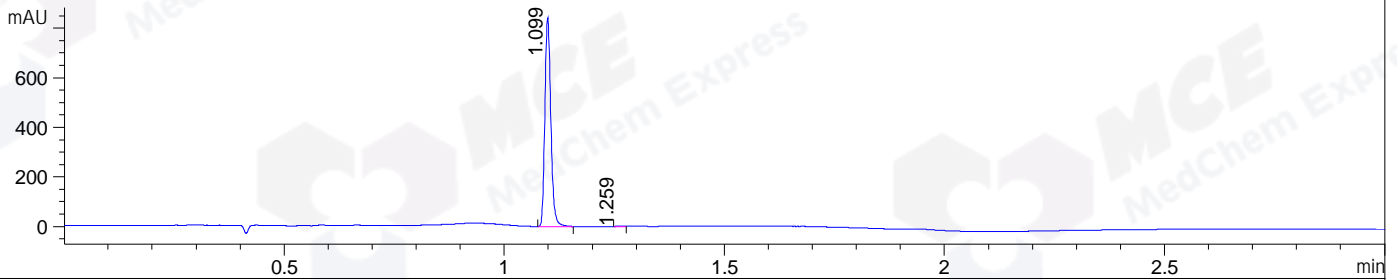


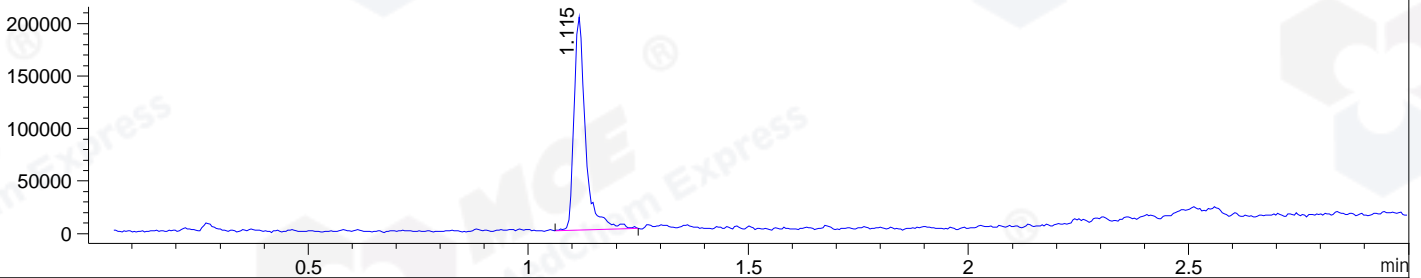
File ..DATA\2020\20201109\1148\BIZ2020-N06-SCH5-.D Tgt Mass (CHM):

Injection Date : 9 Nov 20 12:45 pm +0800 Seq. Line : 48
 Sample Name : BIZ2020-N06-SCH5 Location : P1-A-05
 Acq. Operator : zyj_1547 Inj : 1
 Spec. Reported : MS Integration Inj Volume : 2 ul
 Acq. Method : D:\Chem32\1\data\2020\20201109\1148\1-POS-3MIN.M
 Analysis Method : D:\CHEM32\1\DATA\2020\20201109\1148\1-POS-3MIN.M
 Catalog No : HY-P0078
 Method Info : Mobile Phase: A: water(0.01%TFA) B:ACN(0.01%TFA)
 Gradient: 5% to 95%B within 1.3 min
 Flow Rate :1.8ml/min
 Column :SunFire C18, 4.6*50mm,3.5um A-RP-698

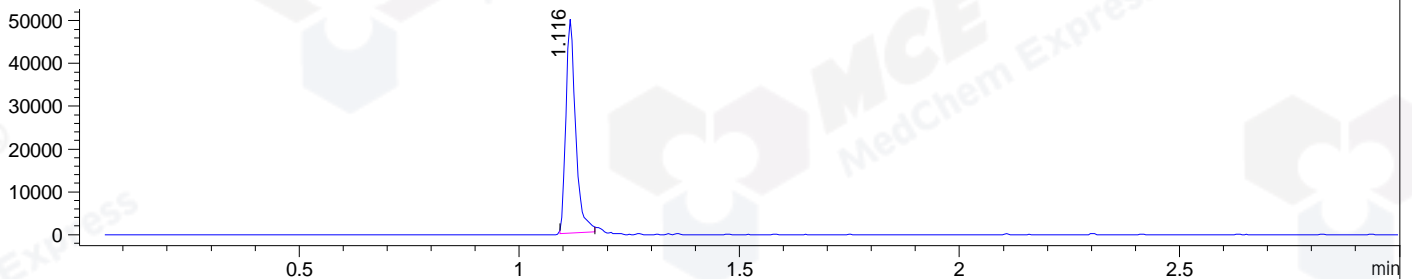
DAD1 B, Sig=214,4 Ref=off



MSD1 TIC, MS File ES-API, Pos, Scan, Frag: 70



Ion 749, MSD1 749, Target Mass 748 +H Positive, EIC=748.7:749.7



Integration Results for DAD1 B, Sig=214,4 Ref=off

| RetTim | Width | Area | Height | Area% | MS (+) |
|--------|-------|--------|--------|-------|--------|
| 1.10 | 0.02 | 793.49 | 841.75 | 99.74 | 375 |
| 1.26 | 0.02 | 2.04 | 2.08 | 0.26 | ND |

Integration Results for MSD1 TIC, MS File

| RetTim | Width | Area | Height | Area% | MS (+) |
|--------|-------|-----------|-----------|--------|--------|
| 1.12 | 0.03 | 376533.28 | 202924.88 | 100.00 | 375 |

Ret. Time: 1.12

<<<< POSITIVE SPECTRA >>>>

ES-API Positive

