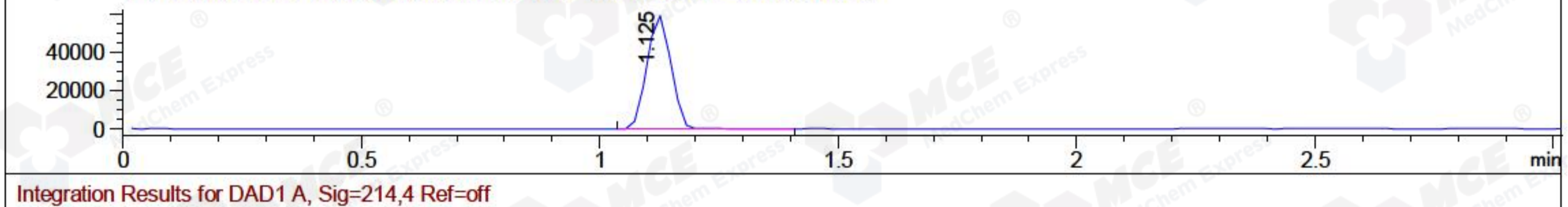
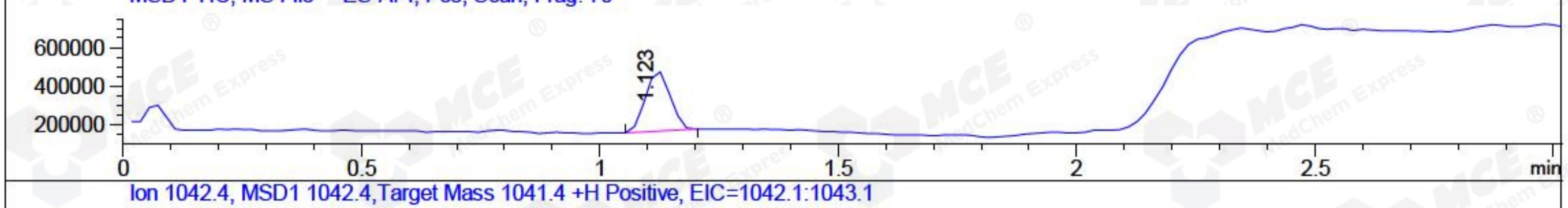
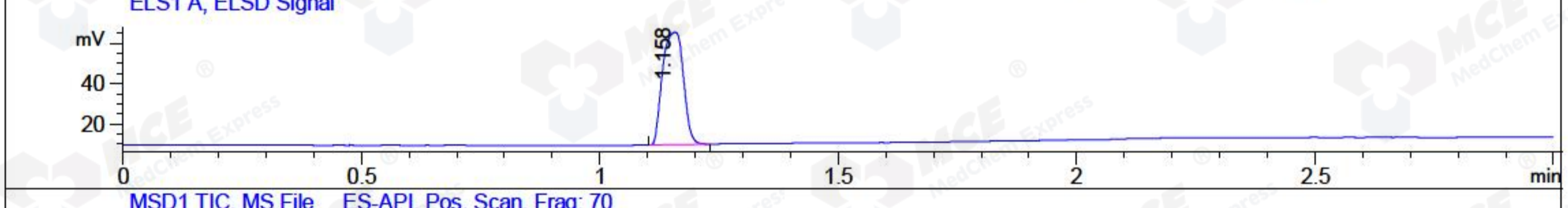
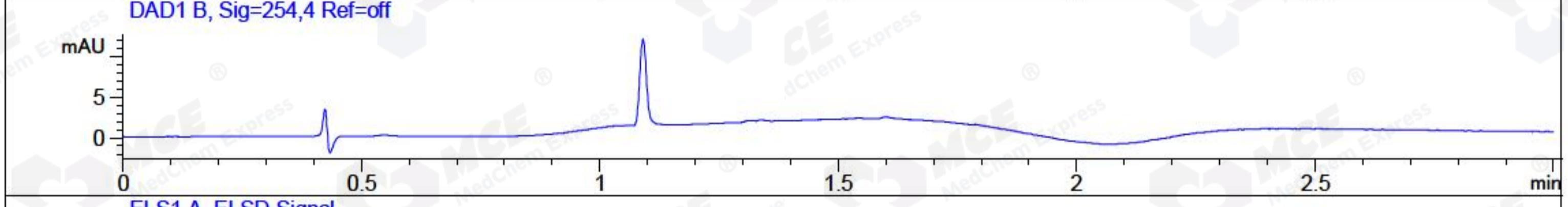
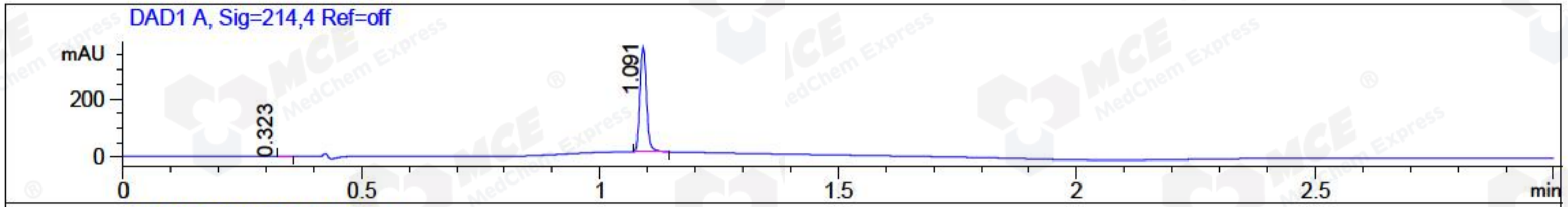


File ..a\2018\20180228\20180228\BIZ2018-228-WYQ9.D Tgt Mass (CHM):
 Injection Date : 28 Feb 18 4:59 pm +0800 Seq. Line : 91
 Sample Name : BIZ2018-228-WYQ9 Location : P2-A-01
 Acq. Operator : SYSTEM Inj : 1
 Spec. Reported : MS Integration Inj Volume : 1 ul
 Acq. Method : D:\LCMS03\Data\2018\20180228\20180228\1-POS-3MIN(100-1500).M
 Analysis Method : D:\LCMS03\Data\2018\20180228\20180228\1-POS-3MIN(100-1500).M
 Catalog No : HY-P0083 Batch#28811
 Method Info : Mobile Phase: A: water(0.01%TFA) B:ACN(0.01%TFA)
 Gradient: 5% to 95%B within 1.3 min
 Flow Rate : 1.8ml/min
 Column :SunFire C18, 4.6*50mm,3.5um A-RP-186
 Oven Temperature : 45C



Integration Results for DAD1 A, Sig=214,4 Ref=off

RetTim	Width	Area	Height	Area%	MS (+)
0.32	0.02	0.35	0.01	0.10	102
1.09	0.02	356.57	360.84	99.90	522

Integration Results for DAD1 B, Sig=254,4 Ref=off

RetTim	Width	Area	Height	Area%	MS (+)

Integration Results for ELS1 A, ELSD Signal

RetTim	Width	Area	Height	Area%	MS (+)
1.16	0.05	170.34	56.07	100.00	522

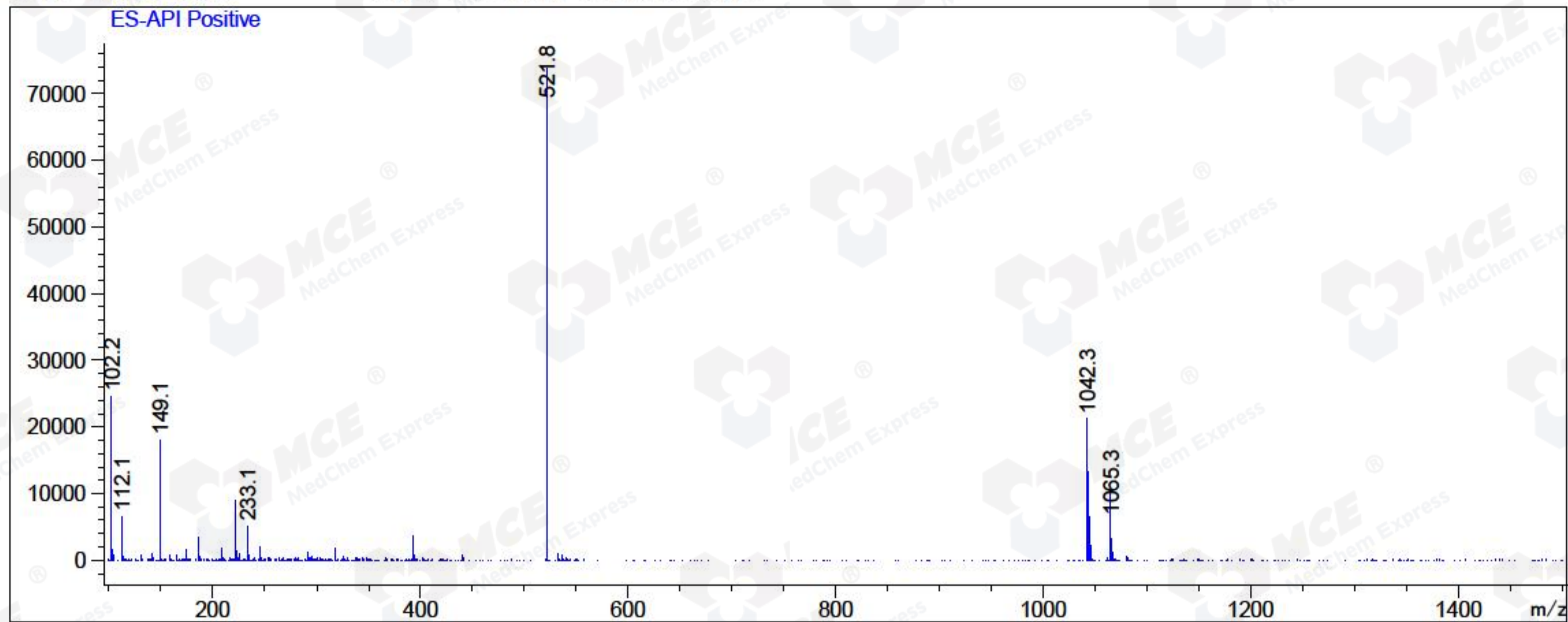
Integration Results for MSD1 TIC, MS File

RetTim	Width	Area	Height	Area%	MS (+)

1.12 0.06 1142775.25 315427.50 100.00 522

Ret. Time: 1.12

<<<< POSITIVE SPECTRA >>>>



*** End of Report ***