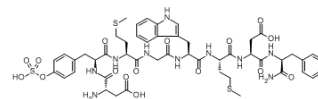


## Data Sheet

Product Name:	Sincalide
Cat. No.:	HY-P0093
CAS No.:	25126-32-3
Molecular Formula:	C <sub>49</sub> H <sub>62</sub> N <sub>10</sub> O <sub>16</sub> S <sub>3</sub>
Molecular Weight:	1143.27
Target:	Others
Pathway:	Others
Solubility:	H <sub>2</sub> O: < 0.05 mg/mL



### BIOLOGICAL ACTIVITY:

Sincalide (INN) is a cholecystokinetic drug administered by injection to aid in researching disorders of the gallbladder and pancreas. The intravenous administration of sincalide causes a prompt contraction of the gallbladder as compared to the stimulus of a fatty meal which causes progressive contraction that becomes maximal in about 40 minutes.

### References:

[1]. Maher KA et al. Kinevac (sincalide for injection)/Squibb Diagnostics. Gastroenterol Nurs. 1991 Oct;14(2):98-100.

**Caution: Product has not been fully validated for medical applications. For research use only.**

Tel: 609-228-6898 Fax: 609-228-5909 E-mail: tech@MedChemExpress.com

Address: 1 Deer Park Dr, Suite Q, Monmouth Junction, NJ 08852, USA