

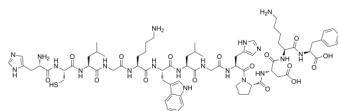
PLP (139-151)

Cat. No.: HY-P0129
Batch No.: 124171
CAS No.: 131334-43-5
Molecular Formula: C₇₂H₁₀₄N₂₀O₁₆S

ANALYTICAL DATA

Theoretical: C(-), H(-), N(-), Peptide Content(≥60.0%)
Result: C(50.11%), H(6.853%), N(14.65%), Peptide Content(80.40%)

Chemical Structure:



Caution: Product has not been fully validated for medical applications. For research use only.

Tel: 609-228-6898

Fax: 609-228-5909

E-mail: tech@MedChemExpress.com

Address: 1 Deer Park Dr, Suite Q, Monmouth Junction, NJ 08852, USA