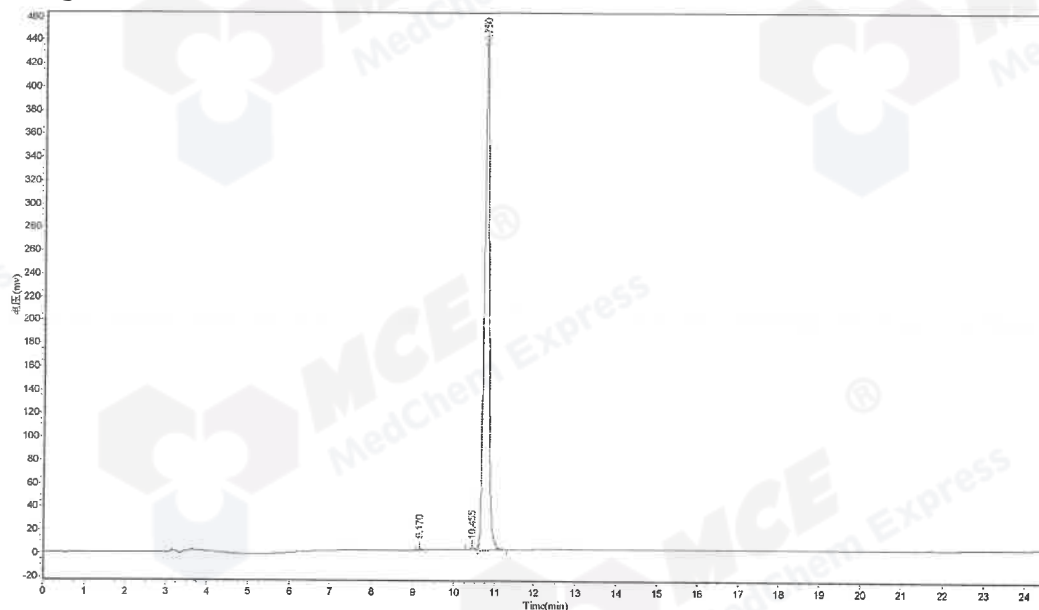


Number :0200049  
 Column :250\*4.6mm,Kromasil-C18-5um  
 Solvent A:0.1%TFA in 100%water  
 Solvent B:0.1%TFA in 100%acetonitrile  
 Gradient :

|         | A    | B    |
|---------|------|------|
| 0.1min  | 82%  | 18%  |
| 25.0min | 57%  | 43%  |
| 25.1min | 0%   | 100% |
| 30.0min | stop |      |

Flow rate:1.0ml/min  
 Wavelength(nm):220

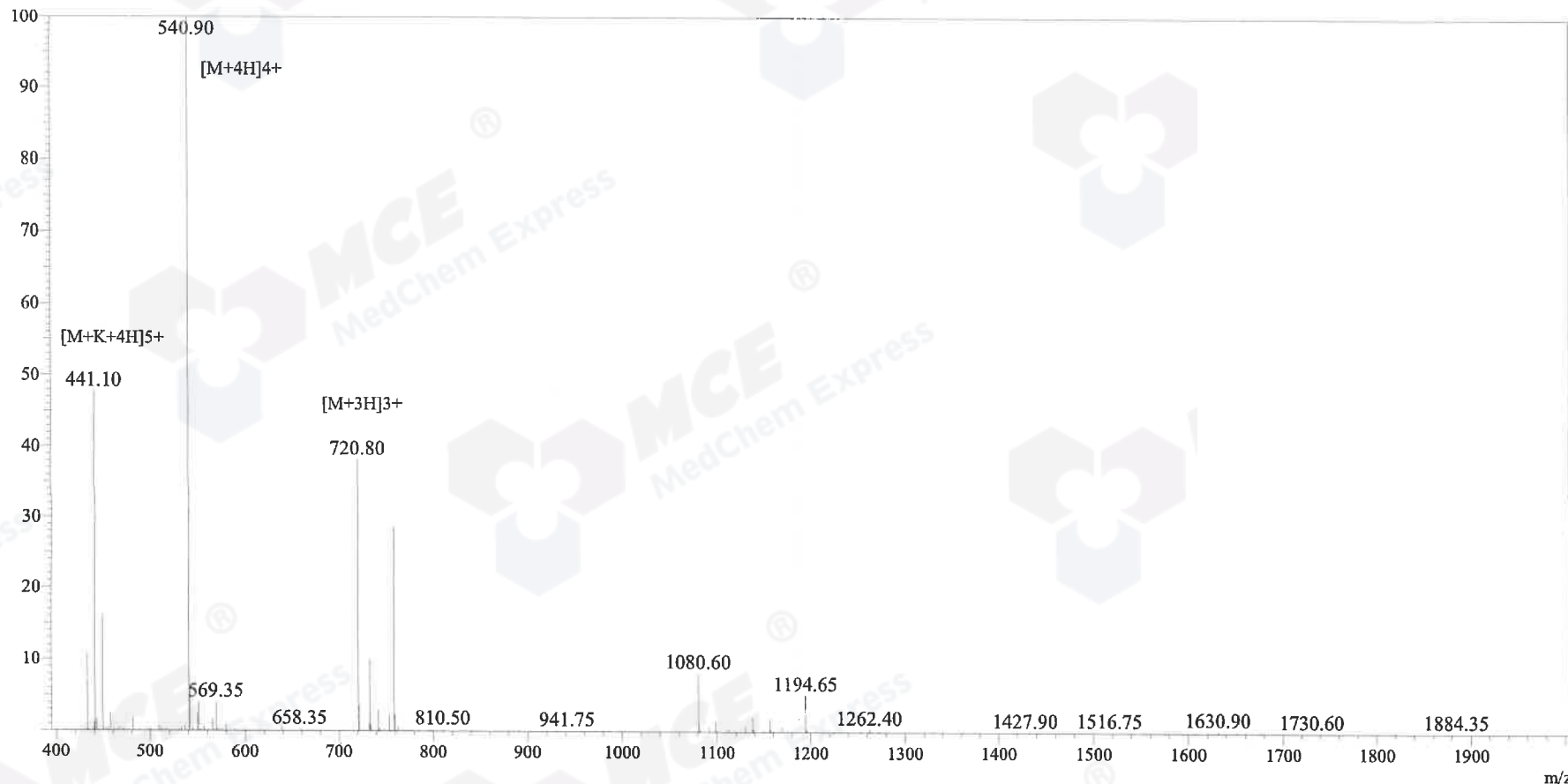
Volume :10ul  
 Catalog No: HY-P0171 Batch#23247



| Peak No | Ret Time | Height     | Area        | Conc.   |
|---------|----------|------------|-------------|---------|
| 1       | 9.170    | 910.716    | 6007.299    | 0.1655  |
| 2       | 10.455   | 2023.221   | 14461.759   | 0.3983  |
| 3       | 10.750   | 438148.938 | 3600910.500 | 99.1861 |
| 4       | 10.750   | 3043.102   | 9079.517    | 0.2501  |
|         |          |            |             | 100.00  |

Positive

MS Spectrum



Sample Information

Acquired by : Zhu  
Time Acquired : 10:25:58  
Month-Day Acquired : 2017/1/9  
Injection Volume : 1  
Sample Name : RR-14  
MW : 2159.64  
Lot No : P161221-LR516925

<<Interface>>

Interface : ESI  
DL Temperature : 250 C  
Nebulizing Gas Flow : 1.50 L/min  
Heat Block : 400 C  
Drying Gas : On  
10.00 L/min  
Probe bias : +4.5kv  
Detector : 1.2kv  
T.Flow : 0.2ml/min  
B.conc : 50%H2O/50%ACN