

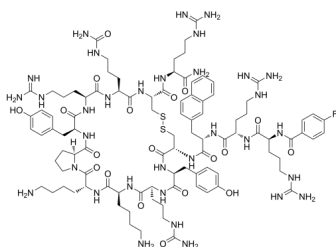
Motixafortide

Cat. No.: HY-P0171
Batch No.: 114729
CAS No.: 664334-36-5
Molecular Formula: $C_{97}H_{144}FN_{33}O_{19}S_2$

ANALYTICAL DATA

Theoretical: C(-), H(-), N(-), Peptide Content($\geq 60.0\%$)
Result: C(43.66%), H(5.98%), N(16.11%), Peptide Content(75.28%)

Chemical Structure:



Caution: Product has not been fully validated for medical applications. For research use only.

Tel: 609-228-6898

Fax: 609-228-5909

E-mail: tech@MedChemExpress.com

Address: 1 Deer Park Dr, Suite Q, Monmouth Junction, NJ 08852, USA