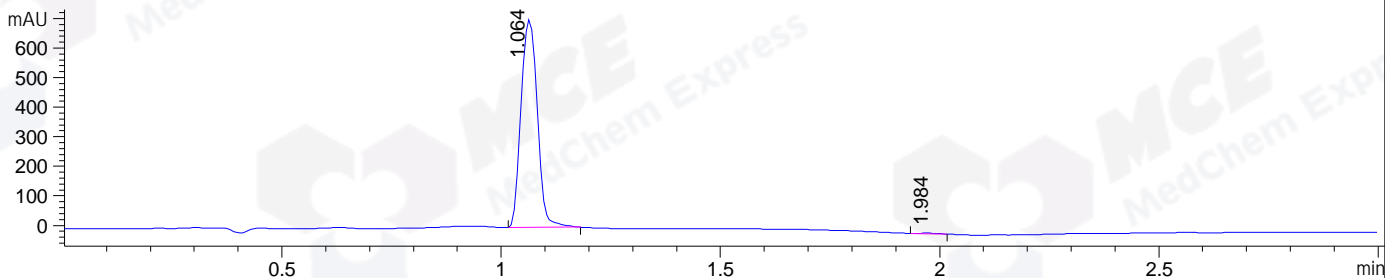
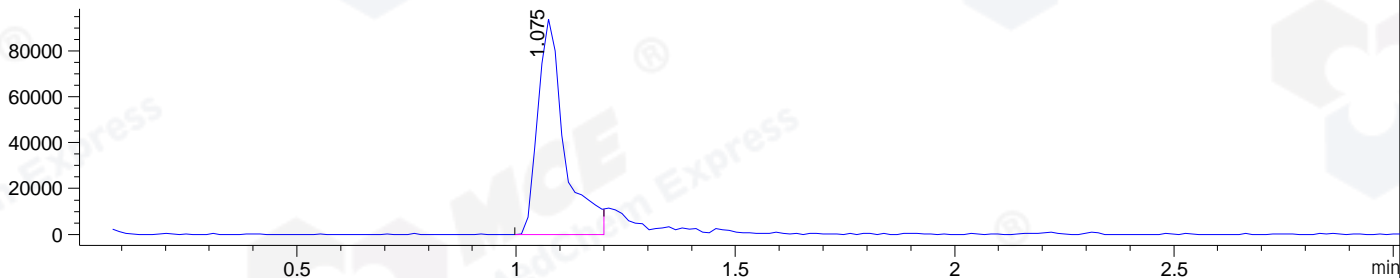


File ..DATA\2020\20201111\1150\BIZ2020-N10-SCH10.D Tgt Mass (CHM):
Injection Date : 11 Nov 20 8:02 pm +0800 Seq. Line : 130
Sample Name : BIZ2020-N10-SCH10 Location : P1-B-07
Acq. Operator : zyj_1547 Inj : 1
Spec. Reported : MS Integration Inj Volume : 5 ul
Acq. Method : D:\Chem32\1\data\2020\20201111\1150\1-POS-3MIN-1(500-2000).M
Analysis Method : D:\CHEM32\1\DATA\2020\20201111\1150\1-POS-3MIN-1(500-2000).M
Catalog No : HY-P0175
Method Info : Mobile Phase: A: water(0.01%TFA) B:ACN(0.01%TFA)
Gradient: 5% to 95%B within 1.3 min
Flow Rate :1.8ml/min
Column :SunFire C18, 4.6*50mm,3.5um A-RP-314
Oven Temperature : 45C
Postive,MS:500-2000

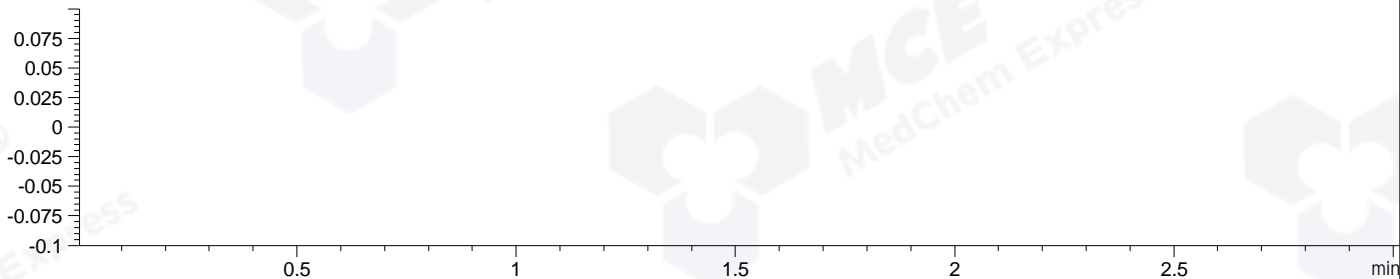
DAD1 B, Sig=214,4 Ref=off



MSD1 TIC, MS File ES-API, Pos, Scan, Frag: 70



Ion 3271, MSD1 3271, Target Mass 3270 +H Positive, EIC=3270.7:3271.7



Integration Results for DAD1 B, Sig=214,4 Ref=off

RetTim	Width	Area	Height	Area%	MS (+)
1.06	0.04	1830.44	704.57	99.67	818
1.98	0.05	6.00	1.97	0.33	ND

Integration Results for MSD1 TIC, MS File

RetTim	Width	Area	Height	Area%	MS (+)
1.07	0.06	395887.16	93914.87	100.00	818

Ret. Time: 1.07

<<<< POSITIVE SPECTRA >>>>

ES-API Positive

