

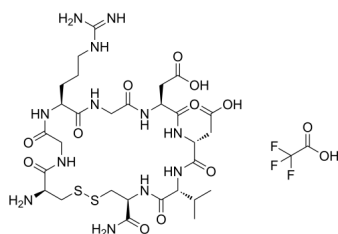
LXW7 (TFA)

Cat. No.: HY-P0178A
Batch No.: 63912
Molecular Formula: C₃₁H₄₉F₃N₁₂O₁₄S₂

ANALYTICAL DATA

Theoretical: C(-), H(-), N(-), Peptide Content(≥60.0%)
Result: C(34.85%), H(4.99%), N(14.72%), Peptide Content(71.90%)

Chemical Structure:



Caution: Product has not been fully validated for medical applications. For research use only.

Tel: 609-228-6898

Fax: 609-228-5909

E-mail: tech@MedChemExpress.com

Address: 1 Deer Park Dr, Suite Q, Monmouth Junction, NJ 08852, USA