

## Bombesin

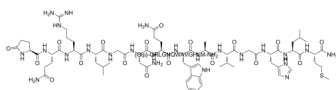
---

Cat. No.: HY-P0195  
Batch No.: 256740  
CAS No.: 31362-50-2  
Molecular Formula: C<sub>71</sub>H<sub>110</sub>N<sub>24</sub>O<sub>18</sub>S

### ANALYTICAL DATA

Theoretical: C(-), H(-), N(-), Peptide Content(≥60.0%)  
Result: C(44.56%), H(5.70%), N(17.54%), Peptide Content(84.53%)

Chemical Structure:



**Caution: Product has not been fully validated for medical applications. For research use only.**

Tel: 609-228-6898

Fax: 609-228-5909

E-mail: [tech@MedChemExpress.com](mailto:tech@MedChemExpress.com)

Address: 1 Deer Park Dr, Suite Q, Monmouth Junction, NJ 08852, USA