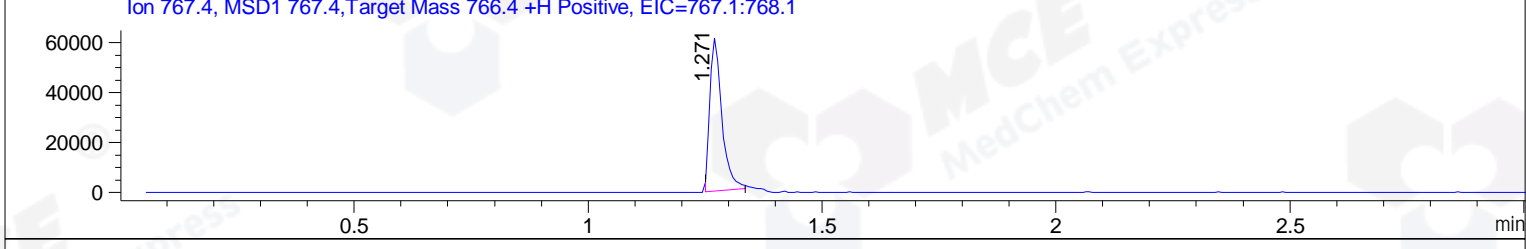
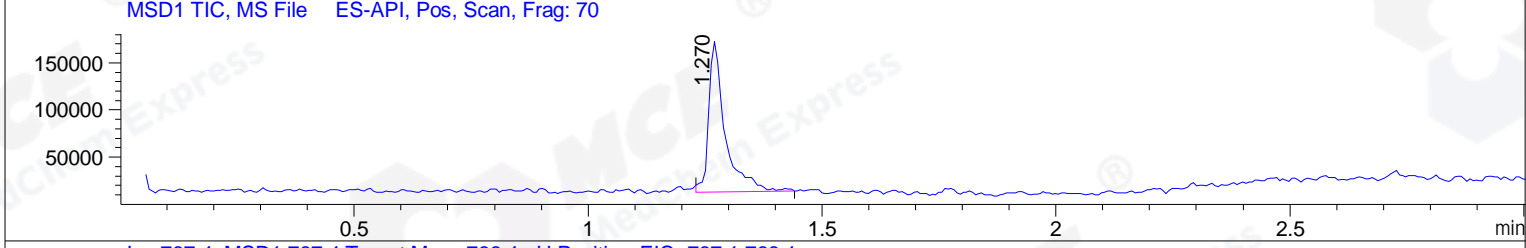
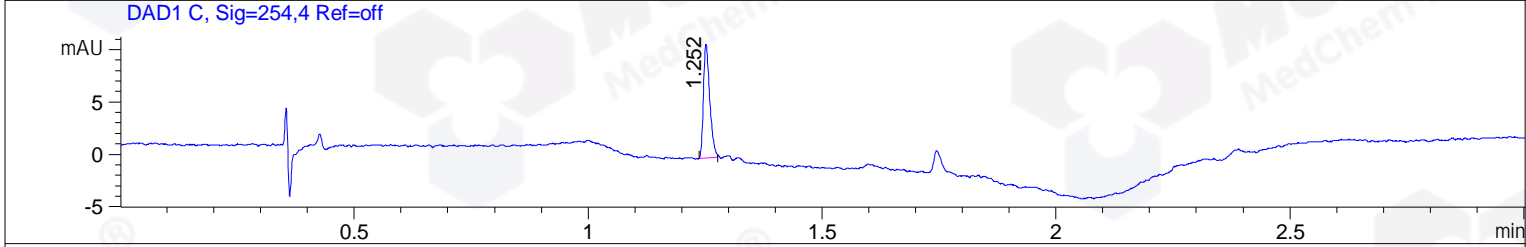
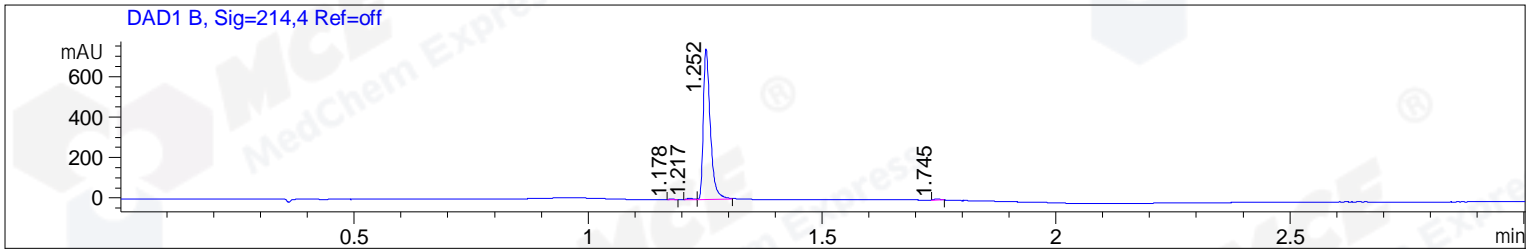


File ..\DATA\2019\20190509\567\BIZ2019-508-WYQ8.D Tgt Mass (CHM):
 Injection Date : 9 May 19 11:30 am +0800 Seq. Line : 23
 Sample Name : BIZ2019-508-WYQ8 Location : PI-B-07
 Acq. Operator : LQ_1052 Inj : 1
 Spec. Reported : MS Integration Inj Volume : 2 ul
 Acq. Method : D:\Chem32\1\data\2019\20190509\567\1-POS-3MIN-1.M
 Analysis Method : D:\CHEM32\1\DATA\2019\20190509\567\1-POS-3MIN-1.M
 Catalog No : HY-P0236A Batch#40930
 Method Info : Mobile Phase: A: water(0.01%TFA) B:ACN(0.01%TFA)
 Gradient: 5% to 95%B within 1.3 min
 Flow Rate :1.8ml/min
 Column :SunFire C18, 4.6*50mm,3.5um A-RP-322
 Oven Temperature : 45



Integration Results for DAD1 B, Sig=214,4 Ref=off

RetTim	Width	Area	Height	Area%	MS (+)
1.18	0.01	2.12	2.68	0.27	130
1.22	0.01	5.40	5.79	0.69	130
1.25	0.02	775.30	744.41	98.48	767
1.75	0.02	4.47	4.77	0.57	130

Integration Results for DAD1 C, Sig=254,4 Ref=off

RetTim	Width	Area	Height	Area%	MS (+)
1.25	0.01	10.24	10.89	100.00	767

Integration Results for MSD1 TIC, MS File

RetTim	Width	Area	Height	Area%	MS (+)
1.27	0.03	392292.22	159811.03	100.00	767

Ret. Time: 1.27

<<<< POSITIVE SPECTRA >>>>

ES-API Positive

