

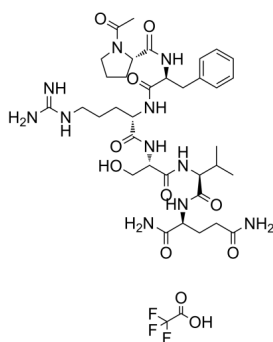
KKI-5 (TFA)

Cat. No.: HY-P0237A
Batch No.: 45554
Molecular Formula: C₃₇H₅₆F₃N₁₁O₁₁

ANALYTICAL DATA

Theoretical: C(-), H(-), N(-), Peptide Content(≥60.0%)
Result: C(46.73%), H(6.51%), N(16.01%), Peptide Content(80.41%)

Chemical Structure:



Caution: Product has not been fully validated for medical applications. For research use only.

Tel: 609-228-6898

Fax: 609-228-5909

E-mail: tech@MedChemExpress.com

Address: 1 Deer Park Dr, Suite Q, Monmouth Junction, NJ 08852, USA