

## Tuftsins

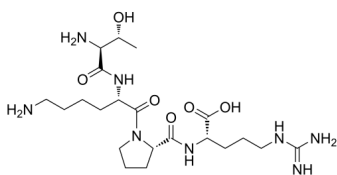
---

Cat. No.: HY-P0240  
Batch No.: 124546  
CAS No.: 9063-57-4  
Molecular Formula: C<sub>21</sub>H<sub>40</sub>N<sub>8</sub>O<sub>6</sub>

### ANALYTICAL DATA

Theoretical: C(-), H(-), N(-), Peptide Content(≥60.0%)  
Result: C(44.36%), H(8.21%), N(15.55%), Peptide Content(80.26%)

Chemical Structure:



**Caution: Product has not been fully validated for medical applications. For research use only.**

Tel: 609-228-6898

Fax: 609-228-5909

E-mail: [tech@MedChemExpress.com](mailto:tech@MedChemExpress.com)

Address: 1 Deer Park Dr, Suite Q, Monmouth Junction, NJ 08852, USA