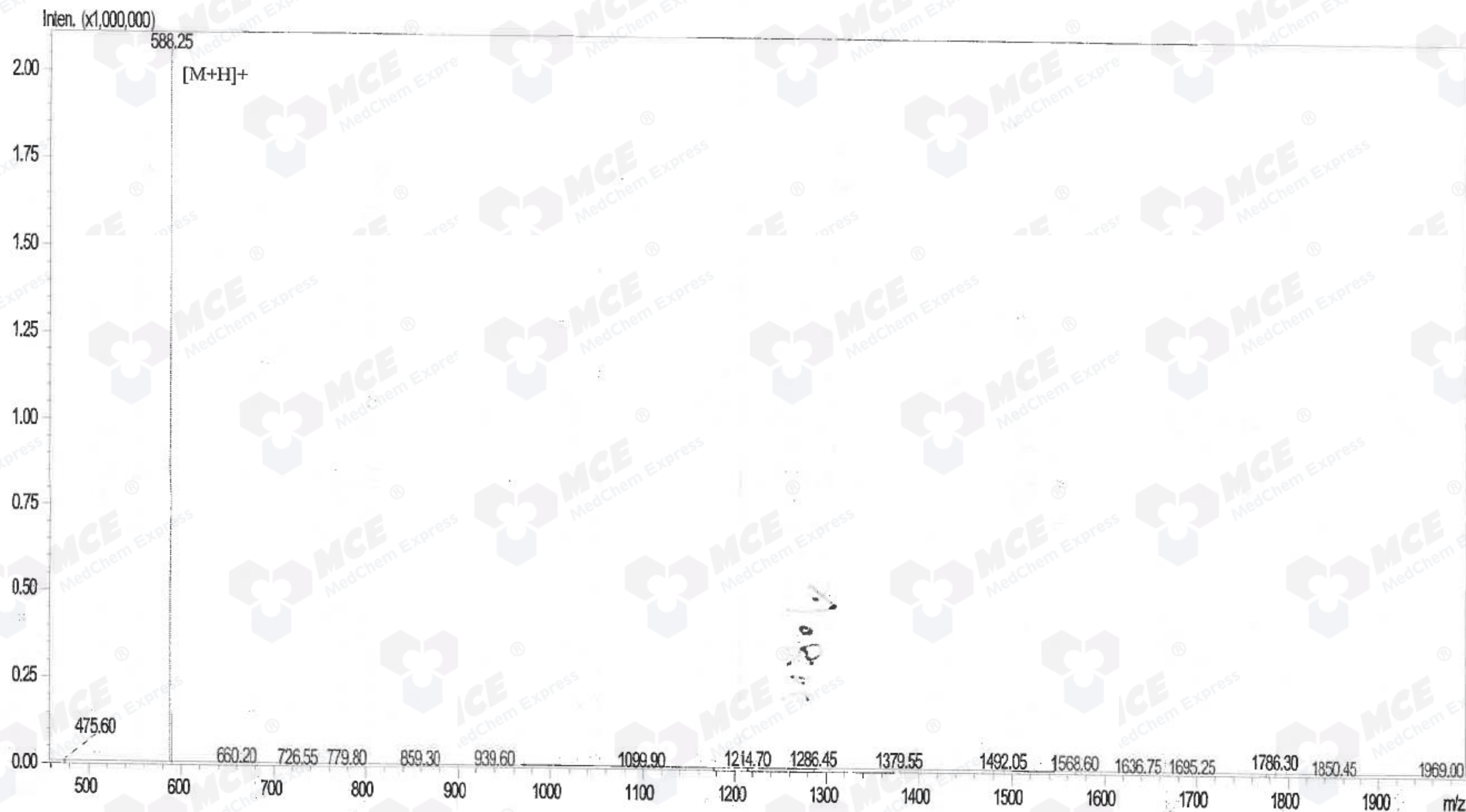


Catalog No: HY-P0290A Batch#33589

MS Spectrum



Data and Time : 2018/10/13  
Sample : GP-6  
Inj. Volume : 1.000  
Mw : 587.58

Probe : ESI  
Nebulizer Gas Flow : 1.5L/min  
CDL : -20.0v  
CDL Temp : 250°C  
Block Temp : 400°C  
Probe bias : -4.5kv  
Detector : 1.2kv  
T.Flow : 0.2ml/min  
B.conc : 50%H2O/50%ACN