

## [Glu1]-Fibrinopeptide B

---

Cat. No.: HY-P0308

Batch No.: 250381

CAS No.: 103213-49-6

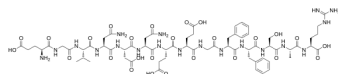
Molecular Formula: C<sub>66</sub>H<sub>95</sub>N<sub>19</sub>O<sub>26</sub>

### ANALYTICAL DATA

Theoretical: C(-), H(-), N(-), Peptide Content(≥60.0%)

Result: C(47.17%), H(6.19%), N(16.07%), Peptide Content(94.9%)

Chemical Structure:



**Caution: Product has not been fully validated for medical applications. For research use only.**

Tel: 609-228-6898

Fax: 609-228-5909

E-mail: [tech@MedChemExpress.com](mailto:tech@MedChemExpress.com)

Address: 1 Deer Park Dr, Suite Q, Monmouth Junction, NJ 08852, USA