

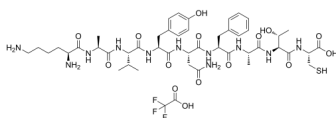
GP(33-41) (TFA)

Cat. No.: HY-P0323A
Batch No.: 160327
Molecular Formula: C₄₈H₇₀F₃N₁₁O₁₅S

ANALYTICAL DATA

Theoretical: C(-), H(-), N(-), Peptide Content(≥60.0%)
Result: C(45.63%), H(6.24%), N(11.97%), Peptide Content(79.00%)

Chemical Structure:



Caution: Product has not been fully validated for medical applications. For research use only.

Tel: 609-228-6898

Fax: 609-228-5909

E-mail: tech@MedChemExpress.com

Address: 1 Deer Park Dr, Suite Q, Monmouth Junction, NJ 08852, USA