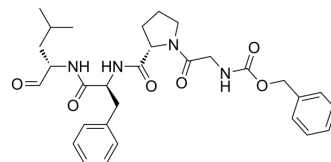


Z-Gly-Pro-Phe-Leu-CHO

Cat. No.:	HY-P10007
CAS No.:	159659-05-9
Molecular Formula:	C ₃₀ H ₃₈ N ₄ O ₆
Molecular Weight:	550.65
Sequence:	Z-Gly-Pro-Phe-Leu-CHO
Sequence Shortening:	Z-GPFL-CHO
Target:	Proteasome
Pathway:	Metabolic Enzyme/Protease
Storage:	Please store the product under the recommended conditions in the Certificate of Analysis.



BIOLOGICAL ACTIVITY

Description

Z-Gly-Pro-Phe-Leu-CHO (Z-GPFL-CHO) is a tetrapeptide aldehyde that acts as a highly selective and potent proteasomal inhibitor ($K_i = 1.5 \mu\text{M}$ for branched chain amino acid preferring, $2.3 \mu\text{M}$ for small neutral amino acid preferring, and $40.5 \mu\text{M}$ for chymotrypsin-like activities; $\text{IC}_{50} = 3.1 \mu\text{M}$ for peptidyl-glutamyl peptide hydrolyzing activity)^[1].

REFERENCES

[1]. M Orłowski, et al. Reactions of [¹⁴C]-3,4-dichloroisocoumarin with subunits of pituitary and spleen multicatalytic proteinase complexes (proteasomes). *Biochemistry*. 1997 Nov 11;36(45):13946-53.

Caution: Product has not been fully validated for medical applications. For research use only.

Tel: 609-228-6898

Fax: 609-228-5909

E-mail: tech@MedChemExpress.com

Address: 1 Deer Park Dr, Suite Q, Monmouth Junction, NJ 08852, USA