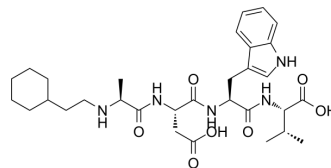


Sakura-6

Cat. No.:	HY-P10029
CAS No.:	2490708-79-5
Molecular Formula:	C ₃₁ H ₄₅ N ₅ O ₇
Molecular Weight:	599.72
Sequence:	{Che}-Ala-Asp-Trp-Val
Sequence Shortening:	{Che}-ADWW
Target:	Others
Pathway:	Others
Storage:	Please store the product under the recommended conditions in the Certificate of Analysis.



BIOLOGICAL ACTIVITY

Description

Sakura-6 is a SERT-nnos interaction promoter that significantly increases the SERT-nnos complex, but reduces the level of SERT on the cell surface. Acute injection of Sakura-6 into the dorsal raphe nucleus (DRN) causes depression-like behavior in mice^[1].

REFERENCES

[1]. Sun N, et al. Design of fast-onset antidepressant by dissociating SERT from nNOS in the DRN[J]. Science, 2022, 378(6618): 390-398.

Caution: Product has not been fully validated for medical applications. For research use only.

Tel: 609-228-6898

Fax: 609-228-5909

E-mail: tech@MedChemExpress.com

Address: 1 Deer Park Dr, Suite Q, Monmouth Junction, NJ 08852, USA