

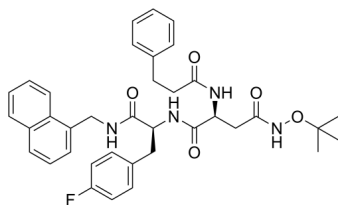
DPLG3

Cat. No.: HY-P10030
Batch No.: 534863
CAS No.: 1801379-22-5
Molecular Formula: C₃₇H₄₁FN₄O₅

ANALYTICAL DATA

Theoretical: C(-), H(-), N(-), Peptide Content(≥60.0%)
Result: C(68.66%), H(6.81%), N(8.14%), Peptide Content(93.1%)

Chemical Structure:



Caution: Product has not been fully validated for medical applications. For research use only.

Tel: 609-228-6898

Fax: 609-228-5909

E-mail: tech@MedChemExpress.com

Address: 1 Deer Park Dr, Suite Q, Monmouth Junction, NJ 08852, USA