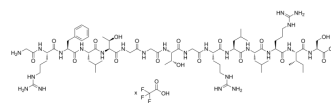


PSMA targeting peptide TFA

Cat. No.:	HY-P10055A
Molecular Formula:	$C_{70}H_{122}N_{24}O_{19} \cdot xC_2HF_3O_2$
Sequence:	Gly-Arg-Phe-Leu-Thr-Gly-Gly-Thr-Gly-Arg-Leu-Leu-Arg-Ile-Ser
Sequence Shortening:	GRFLTGGTGRRLLRIS
Target:	PSMA
Pathway:	Immunology/Inflammation
Storage:	Sealed storage, away from moisture and light
	Powder -80°C 2 years
	-20°C 1 year
	* In solvent : -80°C, 6 months; -20°C, 1 month (sealed storage, away from moisture and light)



SOLVENT & SOLUBILITY

In Vitro	H ₂ O : 100 mg/mL (Need ultrasonic)
-----------------	--

BIOLOGICAL ACTIVITY

Description	PSMA targeting peptide TFA (PSMA-1 TFA) is a PSMA targeting peptide (GRFLTGGTGRRLLRIS) and can be used for targeted delivery of glucose-regulated protein (GRP)-silencing siRNAs in PCa cells ^[1] .
--------------------	--

REFERENCES

[1]. Cultrara CN, et al. Size Matters: Arginine-Derived Peptides Targeting the PSMA Receptor Can Efficiently Complex but Not Transfect siRNA. *Mol Ther Nucleic Acids*. 2019;18:863-870.

Caution: Product has not been fully validated for medical applications. For research use only.

Tel: 609-228-6898

Fax: 609-228-5909

E-mail: tech@MedChemExpress.com

Address: 1 Deer Park Dr, Suite Q, Monmouth Junction, NJ 08852, USA