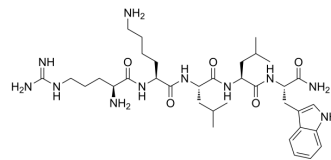


## RKLLW-NH2

Cat. No.:	HY-P10065
CAS No.:	289480-71-3
Molecular Formula:	C <sub>35</sub> H <sub>59</sub> N <sub>11</sub> O <sub>5</sub>
Molecular Weight:	713.91
Sequence:	Arg-Lys-Leu-Leu-Trp-NH2
Sequence Shortening:	RKLLW-NH2
Target:	Cathepsin
Pathway:	Metabolic Enzyme/Protease
Storage:	Please store the product under the recommended conditions in the Certificate of Analysis.



### BIOLOGICAL ACTIVITY

Description	RKLLW-NH2 is a Cathepsin L inhibitor <sup>[1]</sup> .
-------------	---

### REFERENCES

[1]. Falkowski P, et al. Potential of surface plasmon resonance biosensors in cancer detection. J Pharm Biomed Anal. 2021;194:113802.

**Caution: Product has not been fully validated for medical applications. For research use only.**

Tel: 609-228-6898

Fax: 609-228-5909

E-mail: tech@MedChemExpress.com

Address: 1 Deer Park Dr, Suite Q, Monmouth Junction, NJ 08852, USA