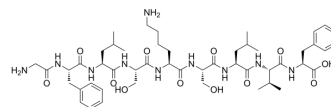


## TREM-1 inhibitory peptide GF9

**Cat. No.:** HY-P10086  
**CAS No.:** 1289375-12-7  
**Molecular Formula:** C<sub>49</sub>H<sub>76</sub>N<sub>10</sub>O<sub>12</sub>  
**Molecular Weight:** 997.19  
**Sequence:** Gly-Phe-Leu-Ser-Lys-Ser-Leu-Val-Phe  
**Sequence Shortening:** GFLSKSLVF  
**Target:** Others  
**Pathway:** Others  
**Storage:** Sealed storage, away from moisture



Powder -80°C 2 years  
 -20°C 1 year

\* In solvent : -80°C, 6 months; -20°C, 1 month (sealed storage, away from moisture)

### SOLVENT & SOLUBILITY

#### In Vitro

DMSO : 1.92 mg/mL (1.93 mM; ultrasonic and adjust pH to 7 with CH<sub>3</sub>COOH)

Preparing Stock Solutions	Solvent Concentration	Mass		
		1 mg	5 mg	10 mg
	1 mM	1.0028 mL	5.0141 mL	10.0282 mL
	5 mM	---	---	---
	10 mM	---	---	---

Please refer to the solubility information to select the appropriate solvent.

### BIOLOGICAL ACTIVITY

#### Description

TREM-1 inhibitory peptide GF9 (Human TREM-1(213-221)) is a ligand-independent TREM-1 inhibitory nonapeptide GF9 that can blunt excessive inflammation caused by rheumatoid arthritis (RA)<sup>[1]</sup>.

### REFERENCES

[1]. Zu T Shen, et al. Rationally designed ligand-independent peptide inhibitors of TREM-1 ameliorate collagen-induced arthritis. J Cell Mol Med. 2017 Oct;21(10):2524-2534.

---

**Caution: Product has not been fully validated for medical applications. For research use only.**

Tel: 609-228-6898

Fax: 609-228-5909

E-mail: [tech@MedChemExpress.com](mailto:tech@MedChemExpress.com)

Address: 1 Deer Park Dr, Suite Q, Monmouth Junction, NJ 08852, USA