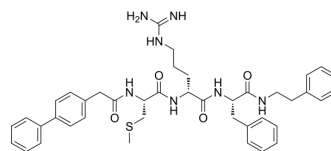


## Cathepsin L-IN-3

Cat. No.:	HY-P10118
CAS No.:	478164-48-6
Molecular Formula:	C <sub>41</sub> H <sub>49</sub> N <sub>7</sub> O <sub>4</sub> S
Molecular Weight:	735.94
Sequence:	{N-(4-Biphenylacetyl)}-{Cys(Me)}-{d-Arg}-Phe-{\beta-Phenethylamide}
Sequence Shortening:	{N-(4-Biphenylacetyl)}-{Cys(Me)}-{d-Arg}-F-{\beta-Phenethylamide}
Target:	Cathepsin
Pathway:	Metabolic Enzyme/Protease
Storage:	Please store the product under the recommended conditions in the Certificate of Analysis.



### BIOLOGICAL ACTIVITY

Description	Cathepsin L-IN-3 is a tripeptide-sized cathepsin L inhibitor.
-------------	---

**Caution: Product has not been fully validated for medical applications. For research use only.**

Tel: 609-228-6898

Fax: 609-228-5909

E-mail: [tech@MedChemExpress.com](mailto:tech@MedChemExpress.com)

Address: 1 Deer Park Dr, Suite Q, Monmouth Junction, NJ 08852, USA