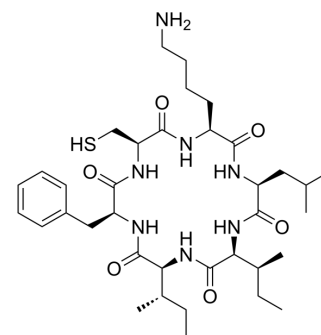


Cyclo(CKLIIF)

Cat. No.:	HY-P10221
Molecular Formula:	C ₃₆ H ₅₉ N ₇ O ₆ S
Molecular Weight:	717.96
Sequence:	Cyclo(Cys-Lys-Leu-Ile-Ile-Phe)
Sequence Shortening:	Cyclo(CKLIIF)
Target:	HIF/HIF Prolyl-Hydroxylase
Pathway:	Metabolic Enzyme/Protease
Storage:	Please store the product under the recommended conditions in the Certificate of Analysis.



BIOLOGICAL ACTIVITY

Description	Cyclo CKLIIF is a dual inhibitor for hypoxia inducible factor (HIF) 1 and 2, which disrupts the interaction of both HIF1- α and HIF2- α with HIF1- β , with affinity for HIF1- α and HIF2- α PAS-B domains K_D of 2.6 and 2.2 μ M, respectively ^[1] .	
IC₅₀ & Target	HIF-2 α 2.2 μ M (Kd)	HIF-1 α 2.6 μ M (Kd)

REFERENCES

[1]. Ball AT, et al., Identification and Development of Cyclic Peptide Inhibitors of Hypoxia Inducible Factors 1 and 2 That Disrupt Hypoxia-Response Signaling in Cancer Cells. J Am Chem Soc. 2024 Mar 19.

Caution: Product has not been fully validated for medical applications. For research use only.

Tel: 609-228-6898

Fax: 609-228-5909

E-mail: tech@MedChemExpress.com

Address: 1 Deer Park Dr, Suite Q, Monmouth Junction, NJ 08852, USA