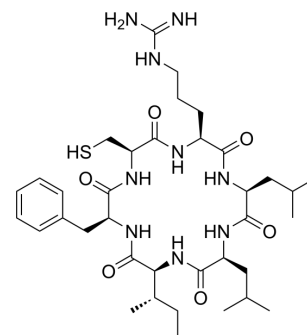


## Cyclo(CRLLIF)

<b>Cat. No.:</b>	HY-P10222
<b>Molecular Formula:</b>	C <sub>36</sub> H <sub>59</sub> N <sub>9</sub> O <sub>6</sub> S
<b>Molecular Weight:</b>	745.98
<b>Sequence:</b>	Cyclo(Cys-Arg-Leu-Leu-Ile-Phe)
<b>Sequence Shortening:</b>	Cyclo(CRLLIF)
<b>Target:</b>	HIF/HIF Prolyl-Hydroxylase
<b>Pathway:</b>	Metabolic Enzyme/Protease
<b>Storage:</b>	Please store the product under the recommended conditions in the Certificate of Analysis.



### BIOLOGICAL ACTIVITY

<b>Description</b>	Cyclo CRLLIF is a dual inhibitor for hypoxia inducible factor (HIF) 1 and 2, which disrupts the interaction of both HIF1- $\alpha$ and HIF2- $\alpha$ with HIF1- $\beta$ , with affinity for HIF1- $\alpha$ and HIF2- $\alpha$ PAS-B domains $K_D$ of 14.5 and 10.2 $\mu$ M, respectively <sup>[1]</sup> .	
<b>IC<sub>50</sub> &amp; Target</b>	HIF-2 $\alpha$ 10.2 $\mu$ M (Kd)	HIF-1 $\alpha$ 14.5 $\mu$ M (Kd)

### REFERENCES

[1]. Ball AT, et al., Identification and Development of Cyclic Peptide Inhibitors of Hypoxia Inducible Factors 1 and 2 That Disrupt Hypoxia-Response Signaling in Cancer Cells. J Am Chem Soc. 2024 Mar 19.

**Caution: Product has not been fully validated for medical applications. For research use only.**

Tel: 609-228-6898

Fax: 609-228-5909

E-mail: tech@MedChemExpress.com

Address: 1 Deer Park Dr, Suite Q, Monmouth Junction, NJ 08852, USA