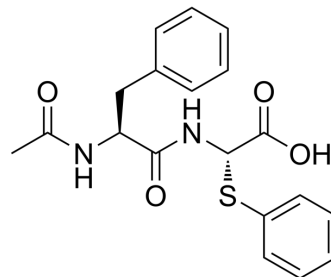


Ac-Phe-Thiaphe-OH

Cat. No.:	HY-P10231
CAS No.:	108906-59-8
Molecular Formula:	C ₁₉ H ₂₀ N ₂ O ₄ S
Molecular Weight:	372.44
Sequence:	Ac-Phe-{Phe<Thia>}
Sequence Shortening:	Ac-F-{Phe<Thia>}
Target:	Carboxypeptidase
Pathway:	Metabolic Enzyme/Protease
Storage:	Please store the product under the recommended conditions in the Certificate of Analysis.



BIOLOGICAL ACTIVITY

Description

Ac-Phe-Thiaphe-OH is a modified peptide, which is utilized as substrate for carboxypeptidase A (CPA)^[1].

REFERENCES

[1]. Brown KS, et al., Determination of carboxypeptidase A using N-acetyl-phenylalanyl-3-thiaphenylalanine as substrate: application to a direct serum assay. *Anal Biochem.* 1987 Feb 15;161(1):219-25.

Caution: Product has not been fully validated for medical applications. For research use only.

Tel: 609-228-6898

Fax: 609-228-5909

E-mail: tech@MedChemExpress.com

Address: 1 Deer Park Dr, Suite Q, Monmouth Junction, NJ 08852, USA