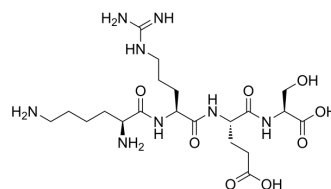


KRES peptide

Cat. No.:	HY-P10258
CAS No.:	867376-23-6
Molecular Formula:	C ₂₀ H ₃₈ N ₈ O ₈
Molecular Weight:	518.56
Sequence:	Lys-Arg-Glu-Ser
Sequence Shortening:	KRES
Target:	Others
Pathway:	Others
Storage:	Please store the product under the recommended conditions in the Certificate of Analysis.



BIOLOGICAL ACTIVITY

Description

KRES peptide is an apolipoprotein with 4 amino acid residues. KRES peptide interacts with lipids, reduces lipoprotein lipid hydroperoxides (LOOH), activates antioxidant enzymes associated with high-density lipoprotein. KRES peptide exhibits anti-inflammatory and anti-atherogenic properties. KRES peptide is orally active^[1].

REFERENCES

[1]. Nagaoka S. Structure-function properties of hypolipidemic peptides. J Food Biochem. 2019 Jan;43(1):e12539.

Caution: Product has not been fully validated for medical applications. For research use only.

Tel: 609-228-6898

Fax: 609-228-5909

E-mail: tech@MedChemExpress.com

Address: 1 Deer Park Dr, Suite Q, Monmouth Junction, NJ 08852, USA