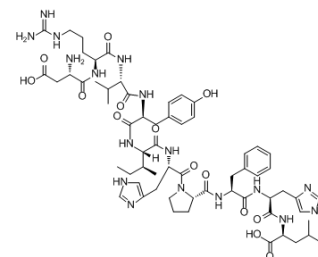


## Angiotensin 1 Human

Cat. No.:	HY-P1032		
CAS No.:	484-42-4		
Molecular Formula:	C <sub>62</sub> H <sub>89</sub> N <sub>17</sub> O <sub>14</sub>		
Molecular Weight:	1296.48		
Sequence:	Asp-Arg-Val-Tyr-Ile-His-Pro-Phe-His-Leu		
Sequence Shortening:	DRVYIHPFHL		
Target:	Others		
Pathway:	Others		
Storage:	Powder	-80°C	2 years
		-20°C	1 year
	In solvent	-80°C	6 months
		-20°C	1 month



### SOLVENT & SOLUBILITY

#### In Vitro

H<sub>2</sub>O : 25 mg/mL (19.28 mM; Need ultrasonic)

Preparing Stock Solutions	Solvent Concentration	Mass		
		1 mg	5 mg	10 mg
	1 mM	0.7713 mL	3.8566 mL	7.7132 mL
	5 mM	0.1543 mL	0.7713 mL	1.5426 mL
	10 mM	0.0771 mL	0.3857 mL	0.7713 mL

Please refer to the solubility information to select the appropriate solvent.

### BIOLOGICAL ACTIVITY

#### Description

Angiotensin 1 (Human) is the precursor to the vasoconstrictor peptide angiotensin II, cleaved by the angiotensin-converting enzyme (ACE).

**Caution: Product has not been fully validated for medical applications. For research use only.**

Tel: 609-228-6898

Fax: 609-228-5909

E-mail: tech@MedChemExpress.com

Address: 1 Deer Park Dr, Suite Q, Monmouth Junction, NJ 08852, USA