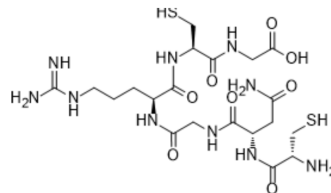


NGR peptide

Cat. No.:	HY-P1043
CAS No.:	651328-78-8
Molecular Formula:	C ₂₀ H ₃₆ N ₁₀ O ₈ S ₂
Molecular Weight:	608.69
Sequence:	Cys-Asn-Gly-Arg-Cys-Gly
Sequence Shortening:	CNGRCG
Target:	Aminopeptidase
Pathway:	Metabolic Enzyme/Protease
Storage:	Please store the product under the recommended conditions in the Certificate of Analysis.



BIOLOGICAL ACTIVITY

Description	NGR peptide containing the Asn-Gly-Arg (NGR) motif. NGR peptide binds to APN/CD13. NGR peptide is directly conjugated to imaging agents that can be used for tumor imaging ^{[1][2]} .	
IC₅₀ & Target	CD13	
In Vivo	NGR peptide (20 mg/kg; i.v.) can be used as a potential SPECT agent for imaging and early diagnosis of tumor ^[2] . MCE has not independently confirmed the accuracy of these methods. They are for reference only.	
	Animal Model:	4-6 weeks, BALB/c nude mice (HepG2 tumor model) ^[2]
	Dosage:	20 mg/kg
	Administration:	i.v.
	Result:	Blocked the tumor uptake for 99mTc-NGR.

REFERENCES

- [1]. Wang RE, et al. Development of NGR peptide-based agents for tumor imaging. *Am J Nucl Med Mol Imaging*. 2011;1(1):36-46.
- [2]. Ma W, et al. Biodistribution and SPECT imaging study of (99m)Tc labeling NGR peptide in nude mice bearing human HepG2 hepatoma. *Biomed Res Int*. 2014;2014:618096.

Caution: Product has not been fully validated for medical applications. For research use only.

Tel: 609-228-6898

Fax: 609-228-5909

E-mail: tech@MedChemExpress.com

Address: 1 Deer Park Dr, Suite Q, Monmouth Junction, NJ 08852, USA