

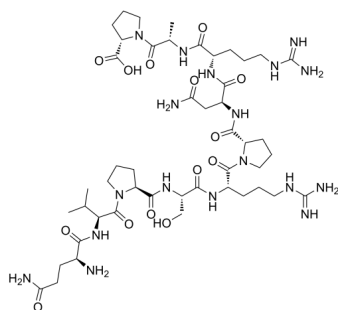
Dynamin inhibitory peptide

Cat. No.: HY-P1083
Batch No.: 259565
CAS No.: 251634-21-6
Molecular Formula: C₄₇H₈₀N₁₈O₁₄

ANALYTICAL DATA

Theoretical: C(-), H(-), N(-), Peptide Content(≥60.0%)
Result: C(40.66%), H(5.64%), N(16.63%), Peptide Content(73.9%)

Chemical Structure:



Caution: Product has not been fully validated for medical applications. For research use only.

Tel: 609-228-6898

Fax: 609-228-5909

E-mail: tech@MedChemExpress.com

Address: 1 Deer Park Dr, Suite Q, Monmouth Junction, NJ 08852, USA