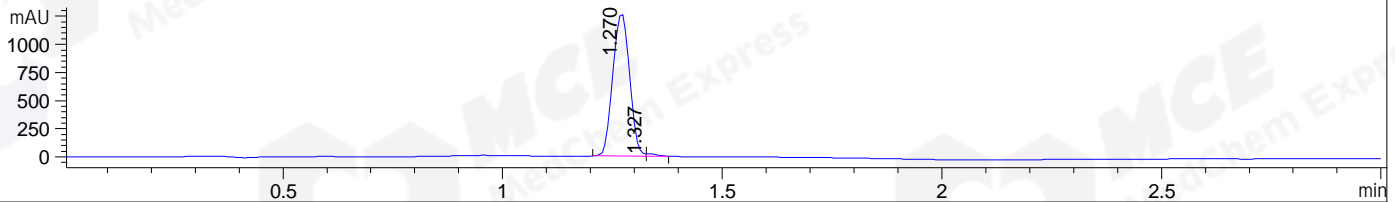


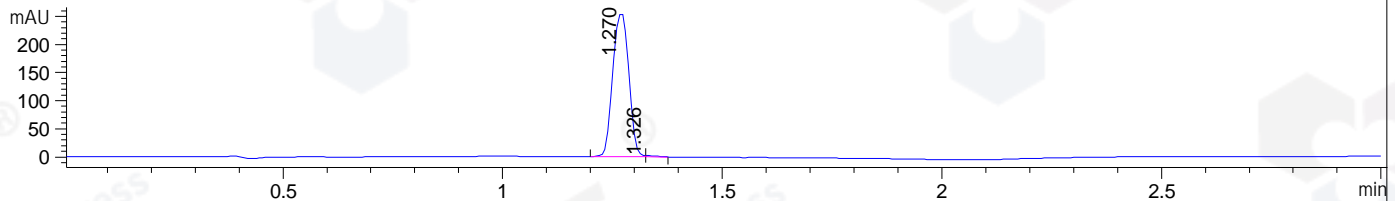
File ..\DATA\2020\20200917\1109\BIZ2020-916-SCH7.D Tgt Mass (CHM):

Injection Date : 17 Sep 20 3:49 pm +0800 Seq. Line : 91  
 Sample Name : BIZ2020-916-SCH7 Location : P1-C-04  
 Acq. Operator : zyj\_1547 Inj : 1  
 Spec. Reported : MS Integration Inj Volume : 5 ul  
 Acq. Method : D:\Chem32\1\data\2020\20200917\1109\1-POS-3MIN-1(500-2000).M  
 Analysis Method : D:\CHEM32\1\DATA\2020\20200917\1109\1-POS-3MIN-1(500-2000).M  
 Catalog No : HY-P1119  
 Method Info : Mobile Phase: A: water(0.01%TFA) B:ACN(0.01%TFA)  
 Gradient: 5% to 95%B within 1.3 min  
 Flow Rate :1.8ml/min  
 Column :SunFire C18, 4.6\*50mm,3.5um A-RP-314  
 Oven Temperature : 45C  
 Postive,MS:500-2000

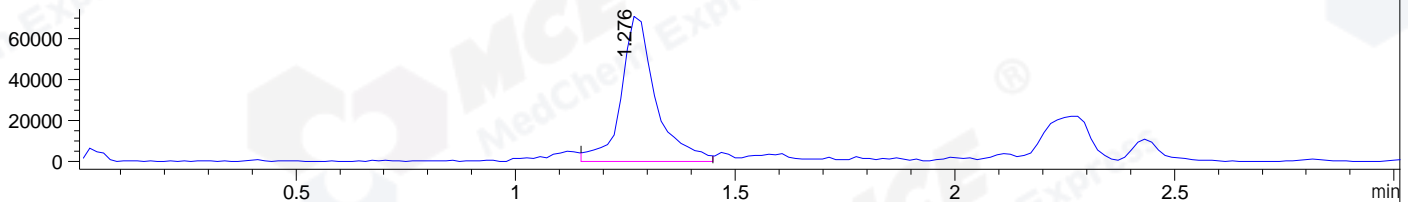
DAD1 B, Sig=214,4 Ref=off



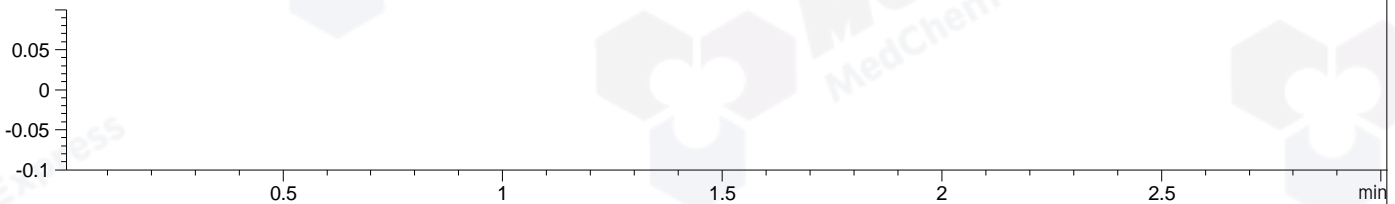
DAD1 C, Sig=254,4 Ref=off



MSD1 TIC, MS File ES-API, Pos, Scan, Frag: 70



Ion 1104, MSD1 1104, Target Mass 1103 +H Positive, EIC=1103.7:1104.7



## Integration Results for DAD1 B, Sig=214,4 Ref=off

RetTim	Width	Area	Height	Area%	MS (+)
1.27	0.04	3380.94	1277.97	99.02	553
1.33	0.03	33.59	22.38	0.98	553

## Integration Results for DAD1 C, Sig=254,4 Ref=off

RetTim	Width	Area	Height	Area%	MS (+)
1.27	0.04	651.64	257.12	99.46	553
1.33	0.02	3.57	2.41	0.54	553

## Integration Results for MSD1 TIC, MS File

RetTim	Width	Area	Height	Area%	MS (+)
1.28	0.08	388260.84	72254.24	100.00	553

Ret. Time: 1.28

<<<< POSITIVE SPECTRA >>>>

ES-API Positive

