

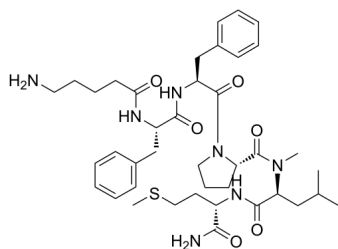
## GR-73632

Cat. No.: HY-P1192  
Batch No.: 259570  
CAS No.: 133156-06-6  
Molecular Formula: C<sub>40</sub>H<sub>59</sub>N<sub>7</sub>O<sub>6</sub>S

### ANALYTICAL DATA

Theoretical: C(-), H(-), N(-), Peptide Content(≥60.0%)  
Result: C(61.12%), H(8.13%), N(12.72%), Peptide Content(99.4%)

Chemical Structure:



**Caution: Product has not been fully validated for medical applications. For research use only.**

Tel: 609-228-6898

Fax: 609-228-5909

E-mail: [tech@MedChemExpress.com](mailto:tech@MedChemExpress.com)

Address: 1 Deer Park Dr, Suite Q, Monmouth Junction, NJ 08852, USA