

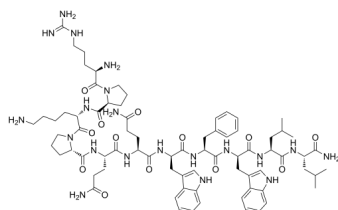
## Spantide I

Cat. No.: HY-P1194  
Batch No.: 282283  
CAS No.: 91224-37-2  
Molecular Formula:  $C_{75}H_{108}N_{20}O_{13}$

### ANALYTICAL DATA

Theoretical: C(-), H(-), N(-), Peptide Content( $\geq 60.0\%$ )  
Result: C(49.22%), H(6.63%), N(14.39%), Peptide Content(76.90%)

Chemical Structure:



**Caution: Product has not been fully validated for medical applications. For research use only.**

Tel: 609-228-6898

Fax: 609-228-5909

E-mail: [tech@MedChemExpress.com](mailto:tech@MedChemExpress.com)

Address: 1 Deer Park Dr, Suite Q, Monmouth Junction, NJ 08852, USA