

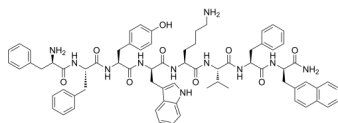
BIM-23056

Cat. No.: HY-P1203
Batch No.: 123263
CAS No.: 150155-61-6
Molecular Formula: C₇₁H₈₁N₁₁O₉

ANALYTICAL DATA

Theoretical: C(-), H(-), N(-), Peptide Content(≥60.0%)
Result: C(65.78%), H(6.55%), N(11.48%), Peptide Content(91.80%)

Chemical Structure:



Caution: Product has not been fully validated for medical applications. For research use only.

Tel: 609-228-6898

Fax: 609-228-5909

E-mail: tech@MedChemExpress.com

Address: 1 Deer Park Dr, Suite Q, Monmouth Junction, NJ 08852, USA