

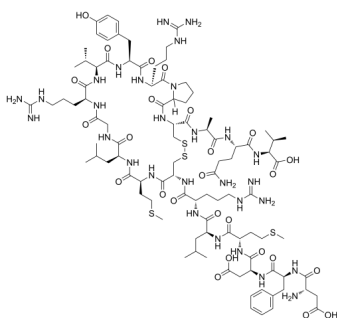
## [Ala17]-MCH

Cat. No.: HY-P1204  
Batch No.: 117127  
CAS No.: 359784-84-2  
Molecular Formula:  $C_{97}H_{155}N_{29}O_{26}S_4$

### ANALYTICAL DATA

Theoretical: C(-), H(-), N(-), Peptide Content( $\geq 60.0\%$ )  
Result: C(46.11%), H(6.96%), N(15.63%), Peptide Content(87.40%)

Chemical Structure:



**Caution: Product has not been fully validated for medical applications. For research use only.**

Tel: 609-228-6898

Fax: 609-228-5909

E-mail: [tech@MedChemExpress.com](mailto:tech@MedChemExpress.com)

Address: 1 Deer Park Dr, Suite Q, Monmouth Junction, NJ 08852, USA