

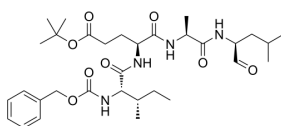
## PSI

Cat. No.: HY-P1258  
CAS No.: 158442-41-2  
Batch No.: 327752  
Chemical Name: L-Alaninamide, N-[(phenylmethoxy)carbonyl]-L-isoleucyl-L- $\alpha$ -glutamyl-N-[(1S)-1-formyl-3-methylbutyl]-, 1,1-dimethylethyl ester

### PHYSICAL AND CHEMICAL PROPERTIES

Molecular Formula:  $C_{32}H_{50}N_4O_8$   
Molecular Weight: 618.76  
Storage: Sealed storage, away from moisture  
Powder -80°C 2 years  
-20°C 1 year  
\* In solvent : -80°C, 6 months; -20°C, 1 month (sealed storage, away from moisture)

### Chemical Structure:



### ANALYTICAL DATA

Appearance: White to off-white (Solid)  
Purity:  $\geq 97.0\%$   
Conclusion: The product has been tested and complies with the given specifications.

**Caution: Product has not been fully validated for medical applications. For research use only.**

Tel: 609-228-6898

Fax: 609-228-5909

E-mail: tech@MedChemExpress.com

Address: 1 Deer Park Dr, Suite Q, Monmouth Junction, NJ 08852, USA