

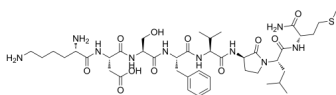
GR 64349

Cat. No.: HY-P1278
Batch No.: 242947
CAS No.: 137593-52-3
Molecular Formula: C₄₂H₆₈N₁₀O₁₁S

ANALYTICAL DATA

Theoretical: C(-), H(-), N(-), Peptide Content(≥60.0%)
Result: C(51.22%), H(7.45%), N(14.20%), Peptide Content(93.40%)

Chemical Structure:



Caution: Product has not been fully validated for medical applications. For research use only.

Tel: 609-228-6898

Fax: 609-228-5909

E-mail: tech@MedChemExpress.com

Address: 1 Deer Park Dr, Suite Q, Monmouth Junction, NJ 08852, USA