

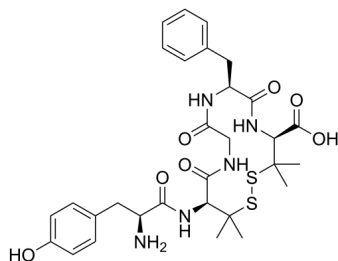
DPDPE

Cat. No.: HY-P1334
Batch No.: 230396
CAS No.: 88373-73-3
Molecular Formula: C₃₀H₃₉N₅O₇S₂

ANALYTICAL DATA

Theoretical: C(-), H(-), N(-), Peptide Content(≥60.0%)
Result: C(50.09%), H(6.65%), N(9.87%), Peptide Content(91.10%)

Chemical Structure:



Caution: Product has not been fully validated for medical applications. For research use only.

Tel: 609-228-6898

Fax: 609-228-5909

E-mail: tech@MedChemExpress.com

Address: 1 Deer Park Dr, Suite Q, Monmouth Junction, NJ 08852, USA