

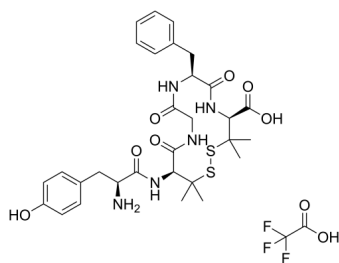
DPDPE (TFA)

Cat. No.: HY-P1334A
Batch No.: 230242
CAS No.: 172888-59-4
Molecular Formula: C₃₂H₄₀F₃N₅O₉S₂

ANALYTICAL DATA

Theoretical: C(-), H(-), N(-), Peptide Content(≥60.0%)
Result: C(47.97%), H(5.69%), N(8.77%), Peptide Content(80.90%)

Chemical Structure:



Caution: Product has not been fully validated for medical applications. For research use only.

Tel: 609-228-6898

Fax: 609-228-5909

E-mail: tech@MedChemExpress.com

Address: 1 Deer Park Dr, Suite Q, Monmouth Junction, NJ 08852, USA