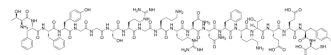


Angiopep-2-Cys

Cat. No.:	HY-P1351
CAS No.:	906480-09-9
Molecular Formula:	C ₁₀₇ H ₁₅₄ N ₃₀ O ₃₂ S
Molecular Weight:	2404.61
Sequence:	Thr-Phe-Phe-Tyr-Gly-Gly-Ser-Arg-Gly-Lys-Arg-Asn-Asn-Phe-Lys-Thr-Glu-Glu-Tyr-Cys
Sequence Shortening:	TFFYGGSRGKRNNFKTEEYC
Target:	Others
Pathway:	Others
Storage:	Sealed storage, away from moisture
	Powder -80°C 2 years
	-20°C 1 year



* In solvent : -80°C, 6 months; -20°C, 1 month (sealed storage, away from moisture)

SOLVENT & SOLUBILITY

In Vitro

DMSO : 10 mg/mL (4.16 mM; Need ultrasonic)

	Solvent Concentration	Mass		
		1 mg	5 mg	10 mg
Preparing Stock Solutions	1 mM	0.4159 mL	2.0793 mL	4.1587 mL
	5 mM	---	---	---
	10 mM	---	---	---

Please refer to the solubility information to select the appropriate solvent.

BIOLOGICAL ACTIVITY

Description

Angiopep-2-cys is a conjugate of Angiopep-2 hydrochloride (HY-P2341) and cysteine. Angiopep-2 hydrochloride is a brain peptide vector. The conjugation of anticancer agents with the Angiopep-2 peptide vector could increase their efficacy in the treatment of brain cancer^[1].

REFERENCES

[1]. Kafa H, et al. Translocation of LRP1 targeted carbon nanotubes of different diameters across the blood-brain barrier in vitro and in vivo. J Control Release. 2016 Mar 10;225:217-29.

Caution: Product has not been fully validated for medical applications. For research use only.

Tel: 609-228-6898

Fax: 609-228-5909

E-mail: tech@MedChemExpress.com

Address: 1 Deer Park Dr, Suite Q, Monmouth Junction, NJ 08852, USA