

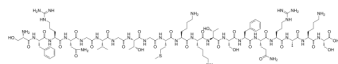
Neuropeptide S (human)

Cat. No.: HY-P1389
Batch No.: 251435
CAS No.: 412938-67-1
Molecular Formula: $C_{93}H_{155}N_{31}O_{28}S$

ANALYTICAL DATA

Theoretical: C(-), H(-), N(-), Peptide Content($\geq 60.0\%$)
Result: C(46.64%), H(6.77%), N(17.10%), Peptide Content(86.10%)

Chemical Structure:



Caution: Product has not been fully validated for medical applications. For research use only.

Tel: 609-228-6898

Fax: 609-228-5909

E-mail: tech@MedChemExpress.com

Address: 1 Deer Park Dr, Suite Q, Monmouth Junction, NJ 08852, USA