

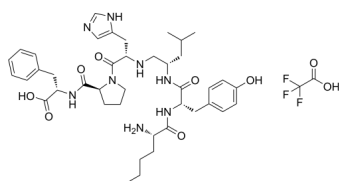
## Norleual (TFA)

Cat. No.: HY-P1415A  
Batch No.: 262510  
Molecular Formula: C<sub>43</sub>H<sub>59</sub>F<sub>3</sub>N<sub>8</sub>O<sub>9</sub>

### ANALYTICAL DATA

Theoretical: C(-), H(-), N(-), Peptide Content(≥60.0%)  
Result: C(48.14%), H(5.26%), N(9.83%), Peptide Content(68.00%)

Chemical Structure:



**Caution: Product has not been fully validated for medical applications. For research use only.**

Tel: 609-228-6898

Fax: 609-228-5909

E-mail: [tech@MedChemExpress.com](mailto:tech@MedChemExpress.com)

Address: 1 Deer Park Dr, Suite Q, Monmouth Junction, NJ 08852, USA