

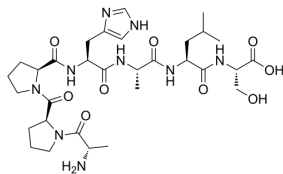
RS 09

Cat. No.: HY-P1439
CAS No.: 1449566-36-2
Batch No.: 120588
Chemical Name: L-Serine, L-alanyl-L-prolyl-L-prolyl-L-histidyl-L-alanyl-L-leucyl-

PHYSICAL AND CHEMICAL PROPERTIES

Molecular Formula: C₃₁H₄₉N₉O₉
Molecular Weight: 691.78
Storage: Powder -80°C 2 years
 -20°C 1 years
 In solvent -80°C 6 months
 -20°C 1 month

Chemical Structure:



ANALYTICAL DATA

Appearance: White to off-white (Solid)
LCMS: Consistent with structure
Purity (LCMS): 99.50%
Peptide Content (%): 86.0%
Nitrogen Content(N%): 15.67%
Carbon Content(C%): 48.26%
Hydrogen Content(H%): 7.493%
Conclusion: The product has been tested and complies with the given specifications.

Caution: Product has not been fully validated for medical applications. For research use only.

Tel: 609-228-6898

Fax: 609-228-5909

E-mail: tech@MedChemExpress.com

Address: 1 Deer Park Dr, Suite Q, Monmouth Junction, NJ 08852, USA