

## RS 09

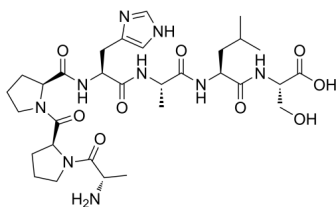
---

Cat. No.: HY-P1439  
Batch No.: 120588  
CAS No.: 1449566-36-2  
Molecular Formula: C<sub>31</sub>H<sub>49</sub>N<sub>9</sub>O<sub>9</sub>

### ANALYTICAL DATA

Theoretical: C(-), H(-), N(-), Peptide Content(≥60.0%)  
Result: C(48.26%), H(7.49%), N(15.67%), Peptide Content(86.00%)

Chemical Structure:



**Caution: Product has not been fully validated for medical applications. For research use only.**

Tel: 609-228-6898

Fax: 609-228-5909

E-mail: [tech@MedChemExpress.com](mailto:tech@MedChemExpress.com)

Address: 1 Deer Park Dr, Suite Q, Monmouth Junction, NJ 08852, USA