

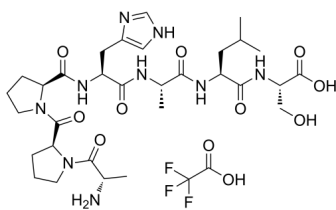
RS 09 (TFA)

Cat. No.: HY-P1439A
Batch No.: 120277
Molecular Formula: C₃₃H₅₀F₃N₉O₁₁

ANALYTICAL DATA

Theoretical: C(-), H(-), N(-), Peptide Content(≥60.0%)
Result: C(48.26%), H(7.49%), N(15.67%), Peptide Content(86.00%)

Chemical Structure:



Caution: Product has not been fully validated for medical applications. For research use only.

Tel: 609-228-6898

Fax: 609-228-5909

E-mail: tech@MedChemExpress.com

Address: 1 Deer Park Dr, Suite Q, Monmouth Junction, NJ 08852, USA