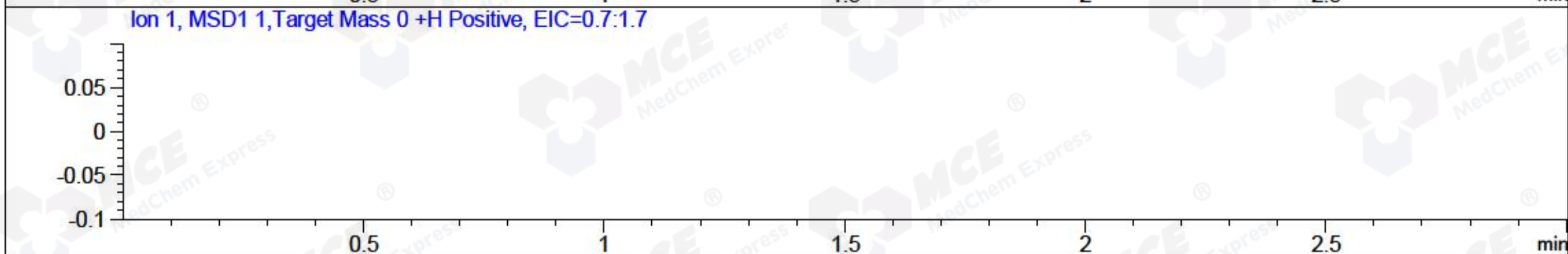
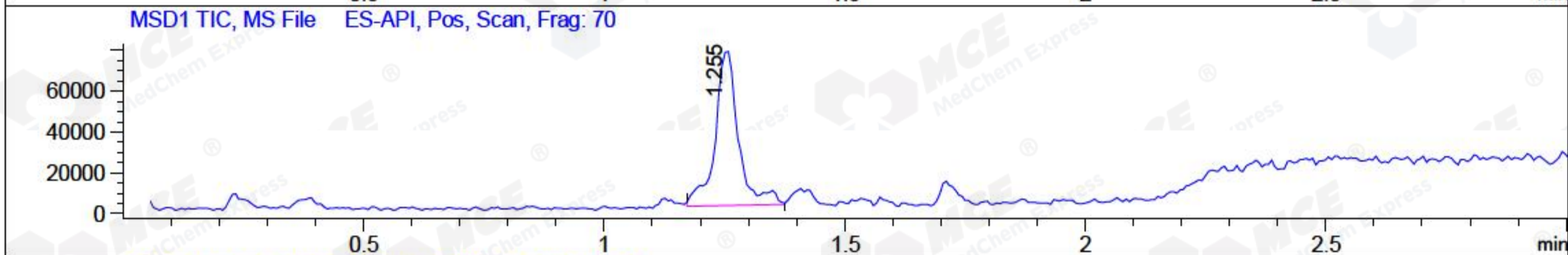
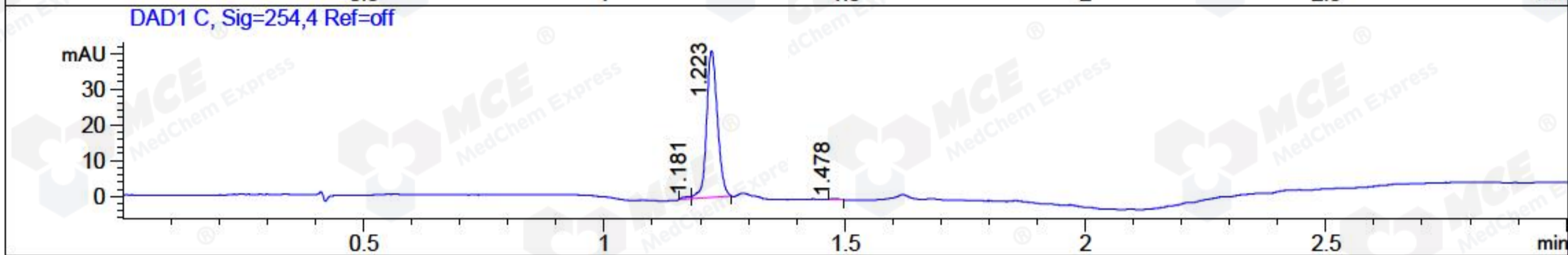
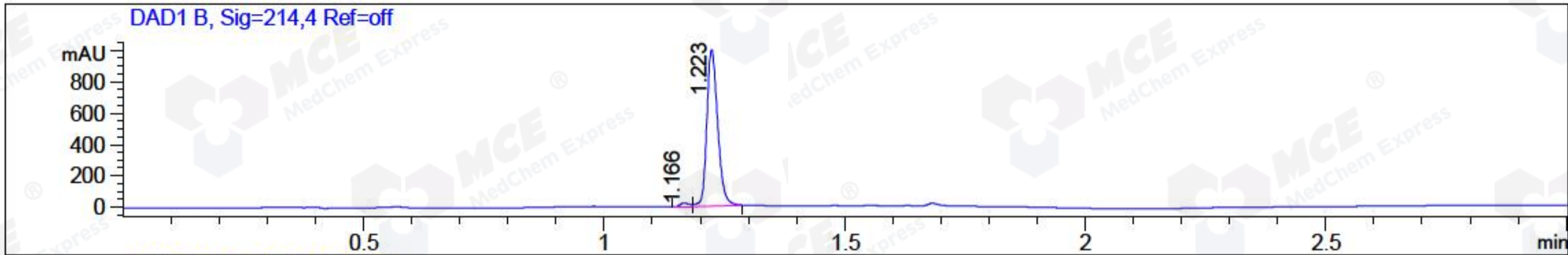


File ..0203 2018-02-03 15-04-42\BIZ2018-203-WYQ6.D Tgt Mass (CHM):  
 Injection Date : 3 Feb 18 3:15 pm +0800 Seq. Line : 2  
 Sample Name : BIZ2018-203-WYQ6 Location : P2-B-08  
 Acq. Operator : XLH\_854 Inj : 1  
 Spec. Reported : MS Integration Inj Volume : 3 ul  
 Acq. Method : D:\chem32\1\DATA\20180203\20180203 2018-02-03 15-04-42\1-POS-3MIN-1.M  
 Analysis Method : D:\CHEM32\1\DATA\20180203\20180203 2018-02-03 15-04-42\1-POS-3MIN-1.M  
 Catalog No : HY-P1447 Batch#28595 A-RP-189  
 Method Info : Mobile Phase: A: water(0.01%TFA) B:ACN(0.01%TFA)  
 Gradient: 5% to 95%B within 1.3 min  
 Flow Rate :1.8ml/min  
 Column :SunFire C18, 4.6\*50mm,3.5um A-RP-186  
 Oven Temperature : 45C



Integration Results for DAD1 B, Sig=214,4 Ref=off

RetTim	Width	Area	Height	Area%	MS (+)
1.17	0.02	27.14	20.44	1.71	114
1.22	0.02	1563.54	991.67	98.29	804

Integration Results for DAD1 C, Sig=254,4 Ref=off

RetTim	Width	Area	Height	Area%	MS (+)
1.18	0.03	0.80	0.61	1.22	ND
1.22	0.03	64.05	41.03	98.37	804
1.48	0.02	0.27	0.28	0.41	ND

Integration Results for MSD1 TIC, MS File

RetTim	Width	Area	Height	Area%	MS (+)
1.25	0.05	257965.88	77062.30	100.00	804

Ret. Time: 1.25

&lt;&lt;&lt;&lt; POSITIVE SPECTRA &gt;&gt;&gt;&gt;

