

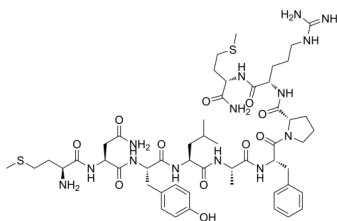
Small Cardioactive Peptide B (SCPB)

Cat. No.: HY-P1495
Batch No.: 112092
CAS No.: 84746-43-0
Molecular Formula: C₅₂H₈₀N₁₄O₁₁S₂

ANALYTICAL DATA

Theoretical: C(-), H(-), N(-), Peptide Content(≥60.0%)
Result: C(46.29%), H(5.95%), N(13.21%), Peptide Content(76.93%)

Chemical Structure:



Caution: Product has not been fully validated for medical applications. For research use only.

Tel: 609-228-6898

Fax: 609-228-5909

E-mail: tech@MedChemExpress.com

Address: 1 Deer Park Dr, Suite Q, Monmouth Junction, NJ 08852, USA