

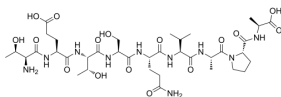
## Rhodopsin Epitope Tag

Cat. No.: HY-P1509  
CAS No.: 102099-07-0  
Batch No.: 86836  
Chemical Name: L-Alanine, L-threonyl-L- $\alpha$ -glutamyl-L-threonyl-L-seryl-L-glutamyl-L-valyl-L-alanyl-L-prolyl-

### PHYSICAL AND CHEMICAL PROPERTIES

Molecular Formula:  $C_{37}H_{62}N_{10}O_{16}$   
Molecular Weight: 902.95  
Storage: Sealed storage, away from moisture and light  
Powder                    -80°C        2 years  
                                  -20°C        1 years  
\* In solvent : -80°C, 6 months; -20°C, 1 month (sealed storage, away from moisture and light)

### Chemical Structure:



### ANALYTICAL DATA

Appearance: White to off-white (Solid)  
Purity (HPLC): 99.49%  
Conclusion: The product has been tested and complies with the given specifications.

**Caution: Product has not been fully validated for medical applications. For research use only.**

Tel: 609-228-6898

Fax: 609-228-5909

E-mail: [tech@MedChemExpress.com](mailto:tech@MedChemExpress.com)

Address: 1 Deer Park Dr, Suite Q, Monmouth Junction, NJ 08852, USA