

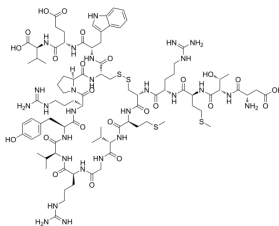
Melanin Concentrating Hormone, salmon

| | |
|----------------|--|
| Cat. No.: | HY-P1525 |
| CAS No.: | 87218-84-6 |
| Batch No.: | 359862 |
| Chemical Name: | L-Valine, L- α -aspartyl-L-threonyl-L-methionyl-L-arginyl-L-cysteinyl-L-methionyl-L-valylglycyl-L-arginyl-L-valyl-L-tyrosyl-L-arginyl-L-prolyl-L-cysteinyl-L-tryptophyl-L- α -glutamyl-, cyclic (5 \rightarrow 14)-disulfide |

PHYSICAL AND CHEMICAL PROPERTIES

| | |
|--------------------|---|
| Molecular Formula: | C ₈₉ H ₁₃₉ N ₂₇ O ₂₄ S ₄ |
| Molecular Weight: | 2099.48 |
| Storage: | Sealed storage, away from moisture |
| | Powder -80°C 2 years |
| | -20°C 1 year |
| | * In solvent : -80°C, 6 months; -20°C, 1 month (sealed storage, away from moisture) |

Chemical Structure:



ANALYTICAL DATA

| | |
|----------------|---|
| Appearance: | White to off-white (Solid) |
| MS: | Consistent with structure |
| Purity (HPLC): | 98.40% |
| Conclusion: | The product has been tested and complies with the given specifications. |

Caution: Product has not been fully validated for medical applications. For research use only.

Tel: 609-228-6898

Fax: 609-228-5909

E-mail: tech@MedChemExpress.com

Address: 1 Deer Park Dr, Suite Q, Monmouth Junction, NJ 08852, USA